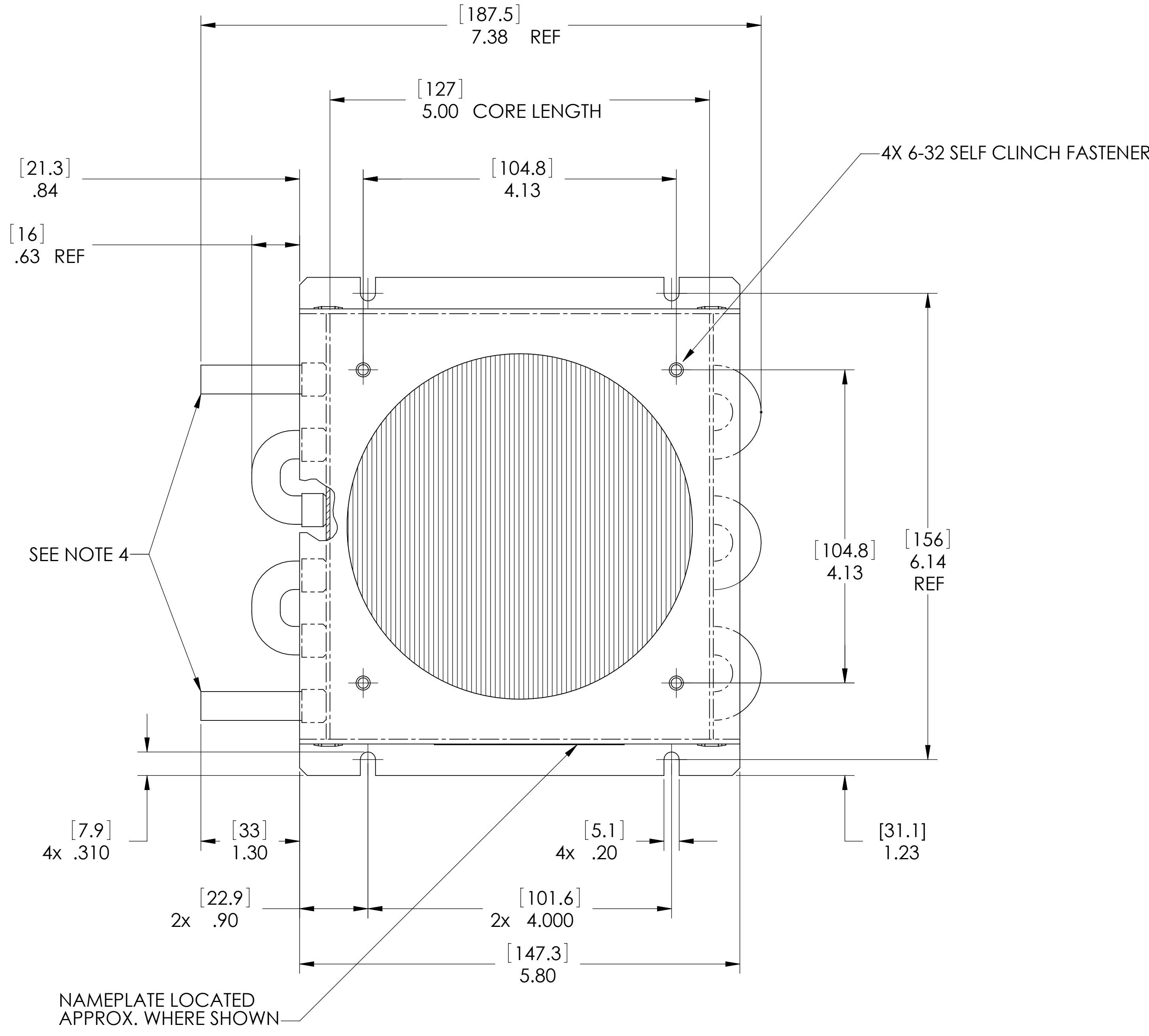
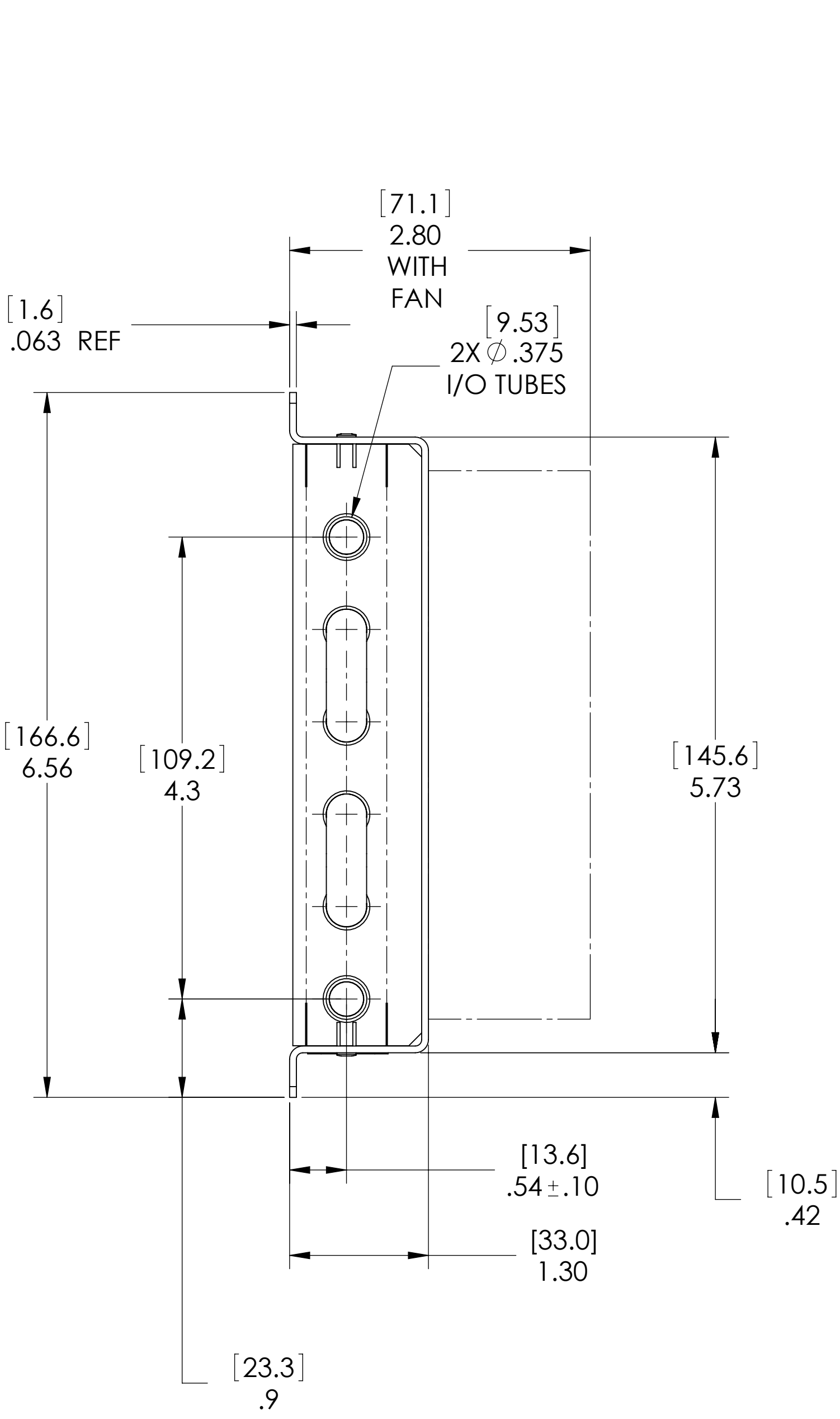


THIS DOCUMENT IS THE PROPERTY OF LYTRON, INC., AND REPRESENTS A PROPRIETARY ARTICLE ON WHICH LYTRON, INC. RETAINS ANY AND ALL PATENT AND OTHER RIGHTS, INCLUDING EXCLUSIVE RIGHTS OF USE AND/OR MANUFACTURE AND/OR SALE. POSSESSION OF THIS DOCUMENT DOES NOT CONVEY ANY PERMISSION TO REPRODUCE THE DOCUMENT OR MANUFACTURE THE ARTICLE OR ARTICLES SHOWN THEREIN.

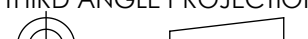


MATERIAL	
FITTINGS	COPPER
OUTER FIN & TUBE	COPPER
FRAME	ALUMINUM

NOTES:

- DIMENSIONS IN [] ARE IN MILLIMETERS.
- LEAK TEST- PNEUMATIC PRESSURE TEST AT 150 PSIG.
- FINISH WILL BE AS FOLLOWS: SEMI GLOSS BLACK ACRYLIC PAINT.
- 1" OF END OF FITTINGS TO BE FREE OF PAINT.

6105G1SB

UNLESS OTHERWISE SPECIFIED		RE-DRN	DATE		<div><div>LYTRON™</div><div>Total Thermal Solutions</div></div> <div>Lytron Inc. 55 Dragon Ct. Woburn Ma. 01801</div>			
ANGULAR DIMENSIONS ARE ± 1° SURFACE ROUGHNESS 125 (3.2µ) BREAK EDGES .010 MAX. REMOVE ALL BURRS		DRN						
TOLERANCE ON DECIMALS		CHK'D	DRAWING TITLE HEAT EXCHANGER ASSY CORE CODE: M06-01-16-4.94					
.X .XX .XXX INCH ±.1 ±.06 ±.010 (mm) ±.2.0 ±.XX ±.XXX		APPV'D						
		APPV'D						
		DO NOT SCALE THIS DRAWING						
THIRD ANGLE PROJECTION 		MAT'L	N/A		SIZE	FSCM NO.	DRAWING NO.	REV
DIMENSIONS AND TOLERANCING ARE PER ANSI STD Y14.5		FINISH	NONE		D	11245	S-6105G1SB	G
					SCALE	1/1	WT.	SHEET 1 OF 2