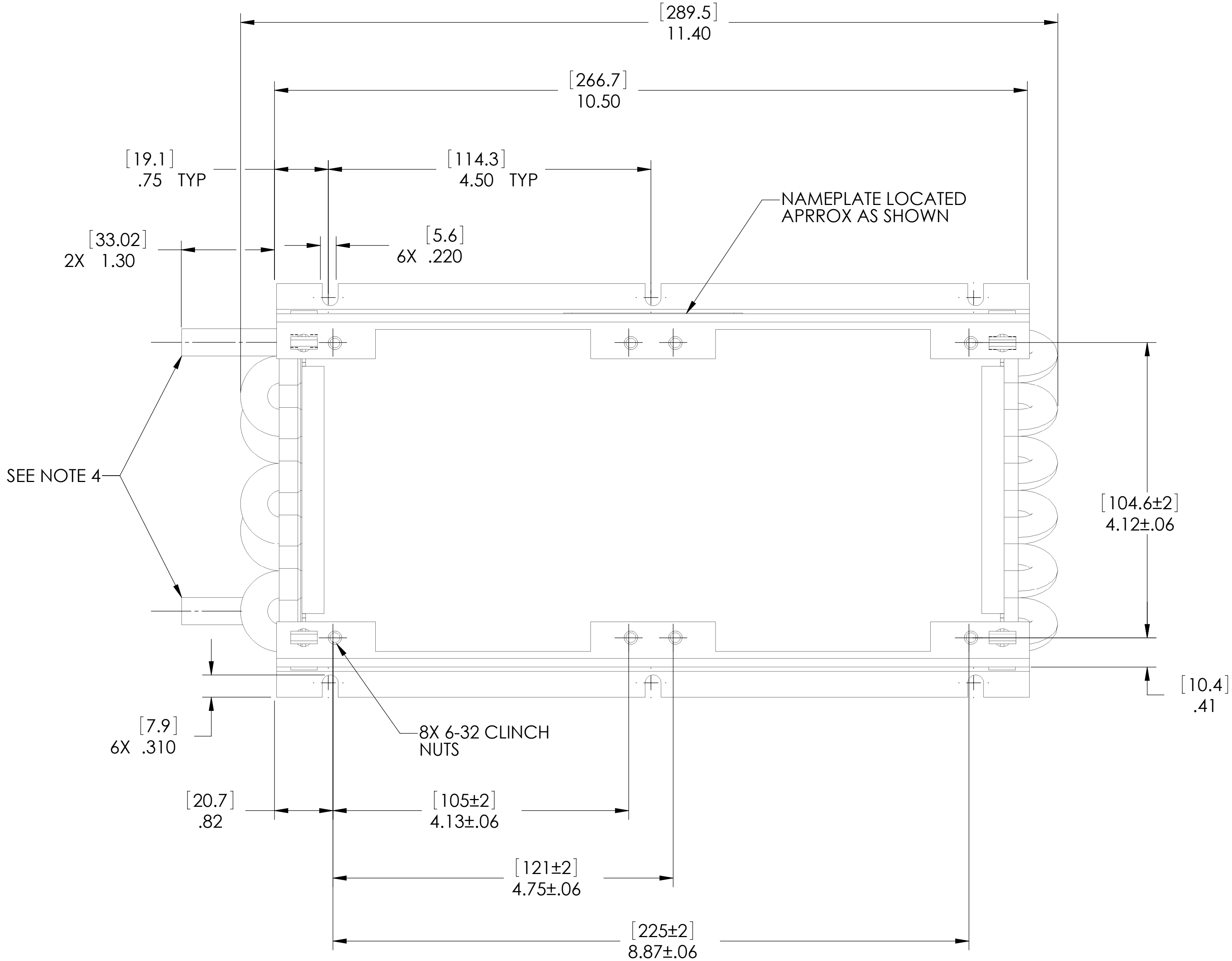
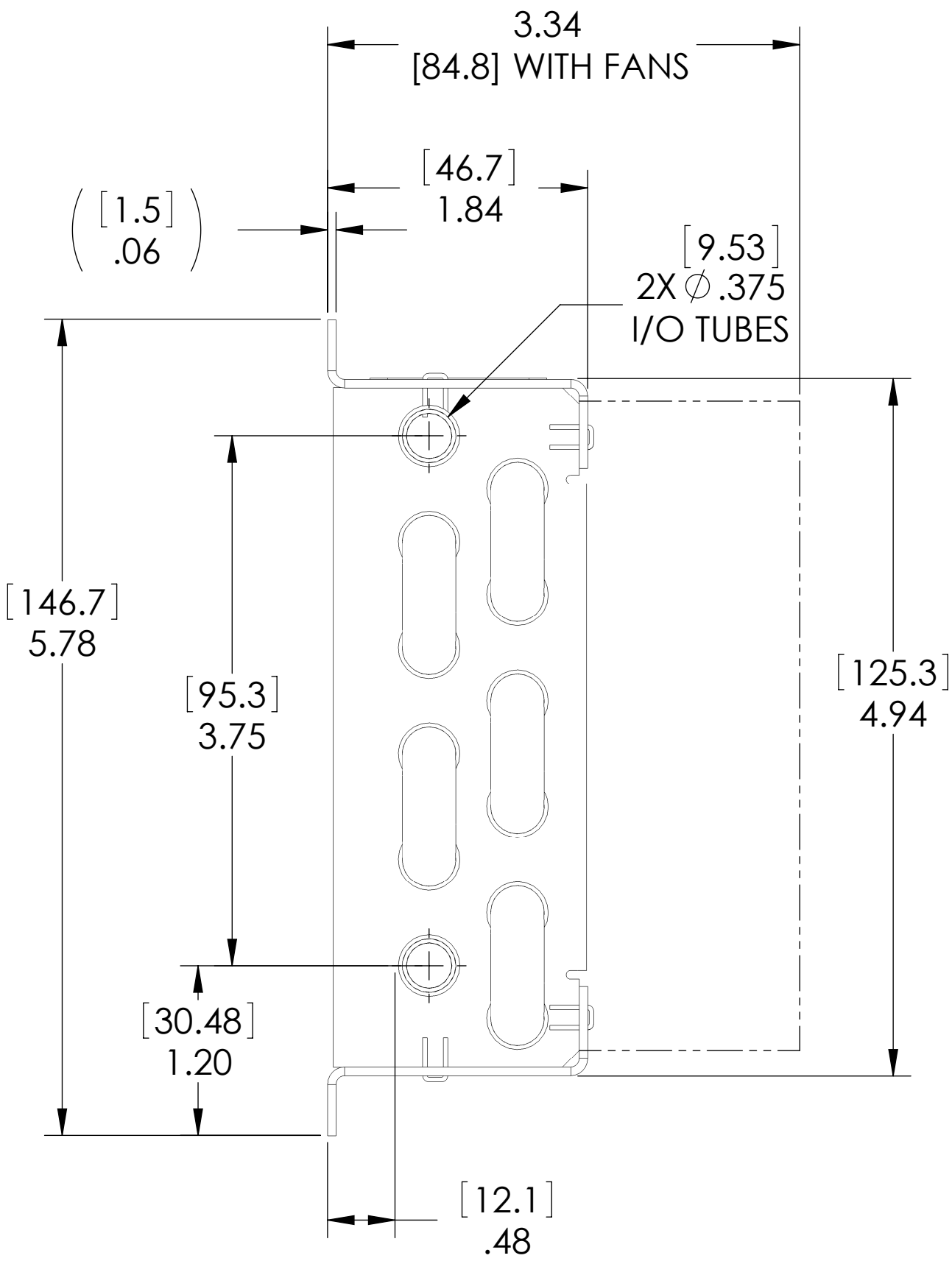


THIS DOCUMENT IS THE PROPERTY OF LYTRON, INC. AND REPRESENTS A PROPRIETARY ARTICLE ON WHICH LYTRON, INC. RETAINS ANY AND ALL PATENT AND OTHER RIGHTS, INCLUDING EXCLUSIVE RIGHTS OF USE AND/OR MANUFACTURE AND/OR SALE. POSSESSION OF THIS DOCUMENT DOES NOT CONVEY ANY PERMISSION TO REPRODUCE THE DOCUMENT OR MANUFACTURE THE ARTICLE OR ARTICLES SHOWN THEREIN.

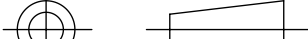


6120G1SB

MATERIAL	
FITTINGS	COPPER
OUTER FIN & TUBE	COPPER
FRAME	ALUMINUM

NOTES:

- DIMENSIONS IN [] ARE IN MILLIMETERS.
- LEAK TEST- PNEUMATIC PRESSURE TEST AT 150 PSIG.
- FINISH WILL BE AS FOLLOWS: SEMI GLOSS BLACK ACRYLIC PAINT.
- 1" OF END OF FITTINGS TO BE FREE OF PAINT.

UNLESS OTHERWISE SPECIFIED		REDRN	DATE		<div><div>LYTRON™</div><div>Total Thermal Solutions</div></div> <div>Lytron Inc. 55 Dragon Ct. Woburn Ma. 01801</div>	
ANGULAR DIMENSIONS ARE ± 1° SURFACE ROUGHNESS 125 (3.2µ) BREAK EDGES .010 MAX. REMOVE ALL BURRS		DRN				
TOLERANCE ON DECIMALS		CHKD	DRAWING TITLE HEAT EXCHANGER ASSY			
.X .XX .XXX INCH ±.X ±.10 ±.010 (mm) ±2.5 ±.XX ±.XXX		APPV'D				
THIRD ANGLE PROJECTION 		APPV'D				
DIMENSIONS AND TOLERANCING ARE PER ANSI STD Y14.5		DO NOT SCALE THIS DRAWING				
		MAT'L Cu & ALUM	SIZE D	FSCM NO. 11245	DRAWING NO. S-6120G1SB	REV P
		FINISH NONE	SCALE 1/1	WT.	SHEET 1 OF 1	