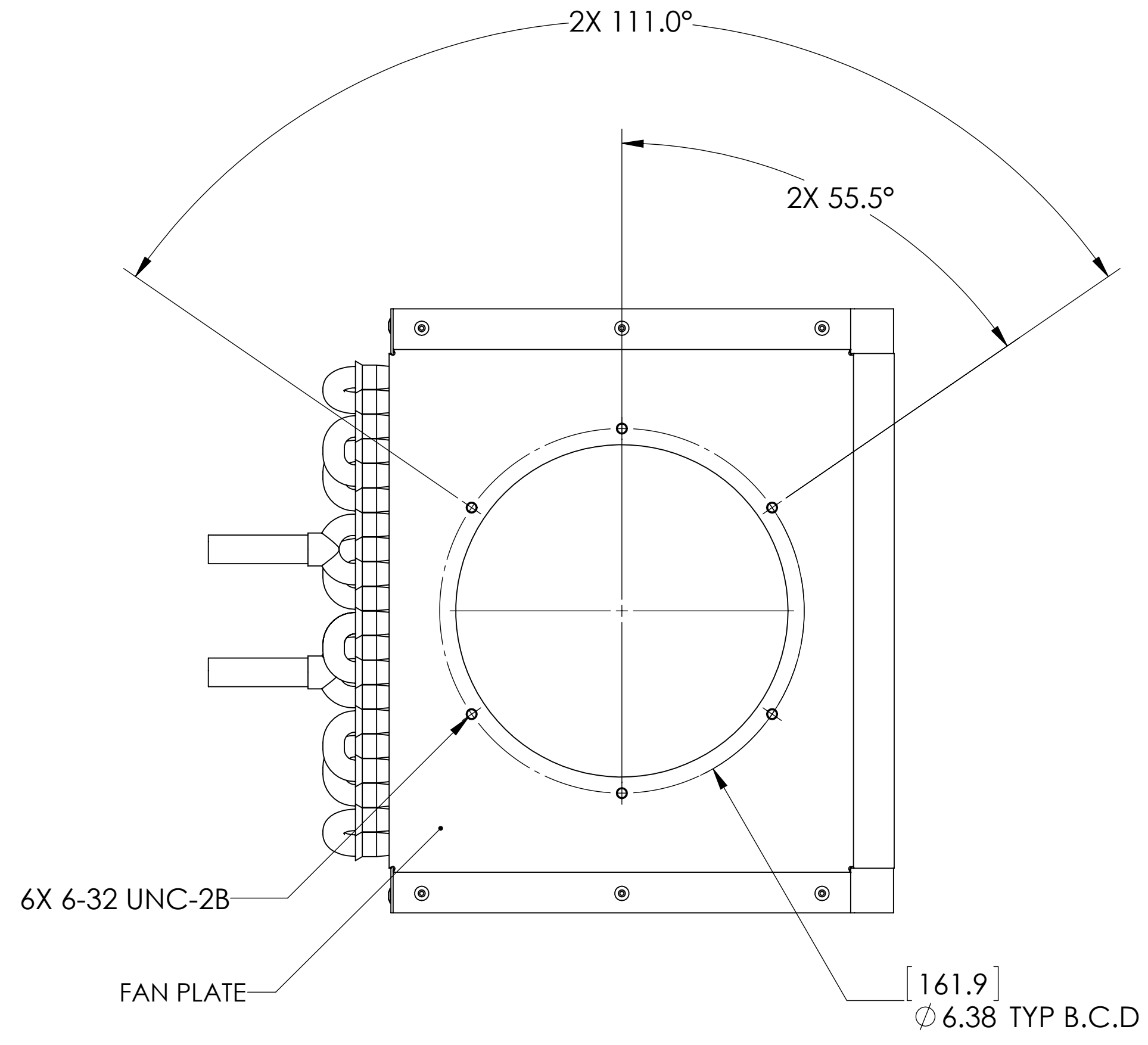
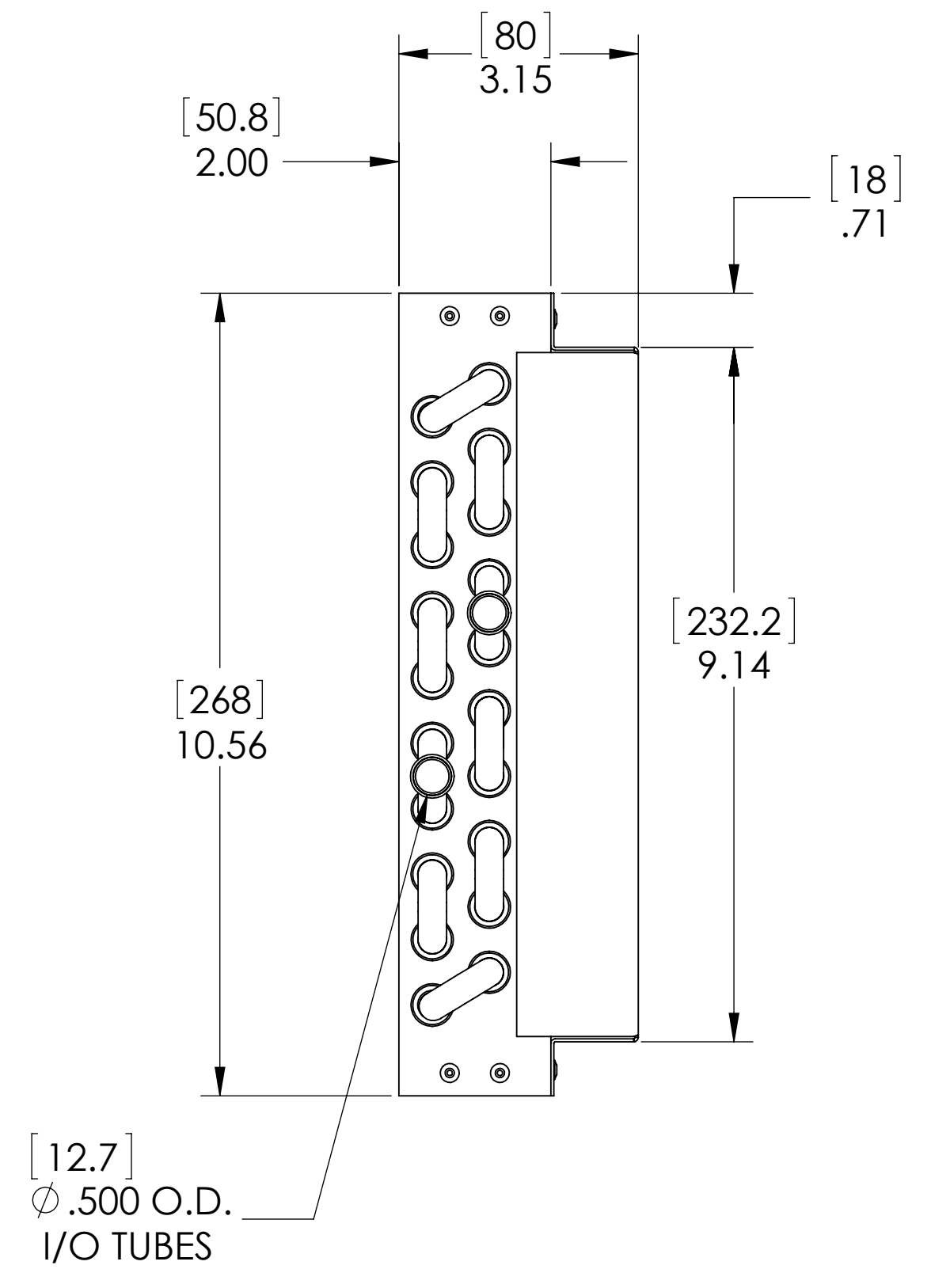
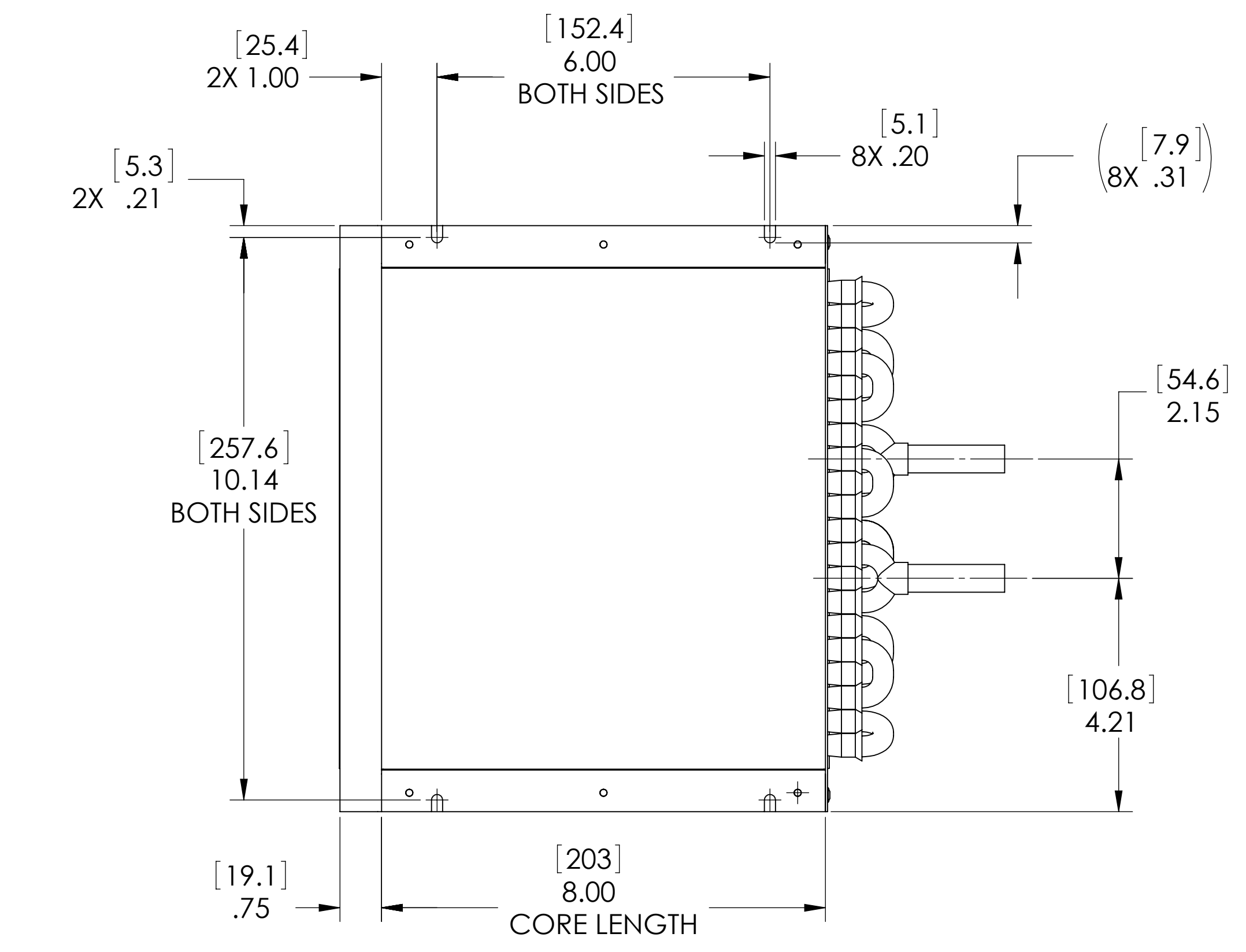
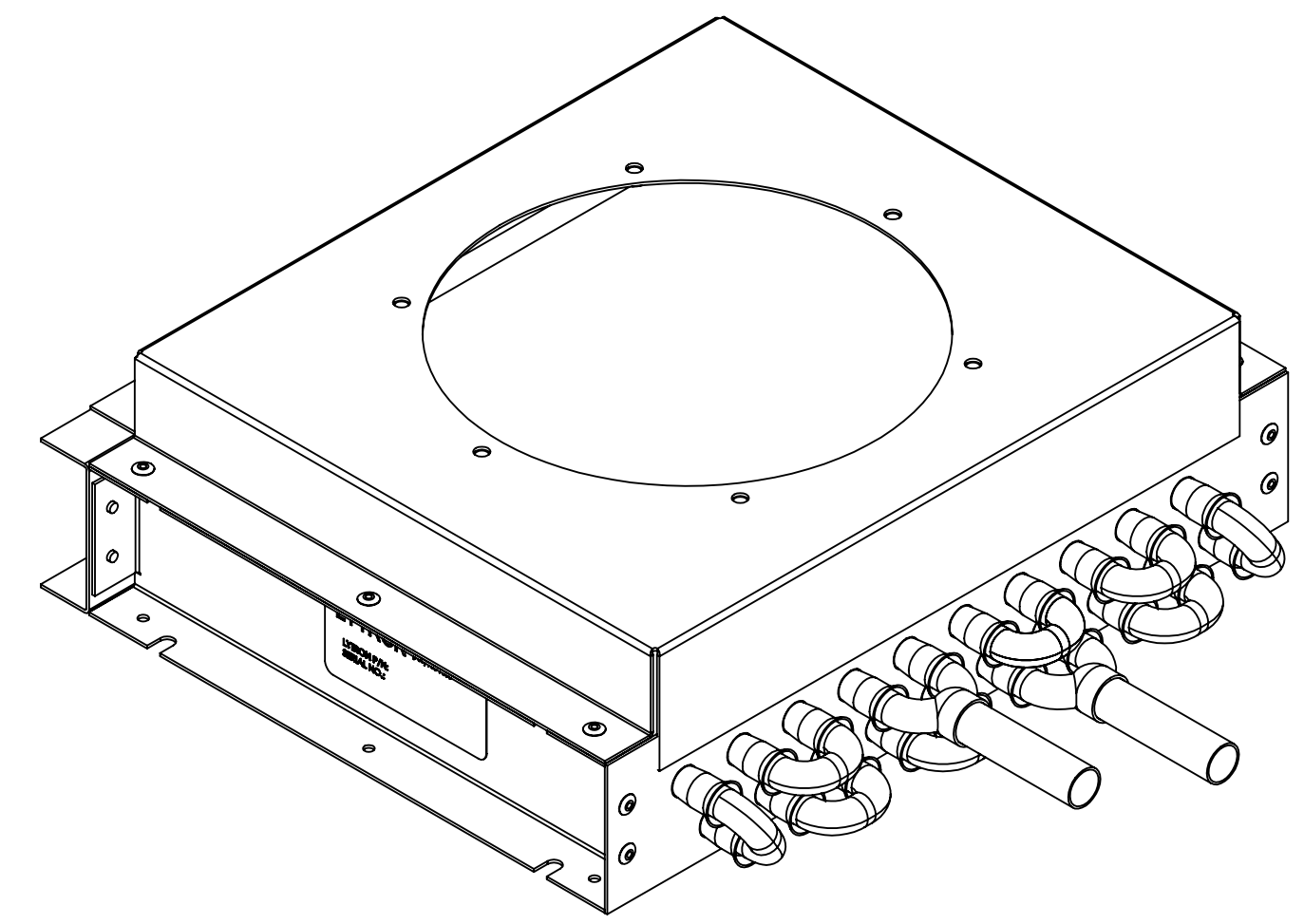
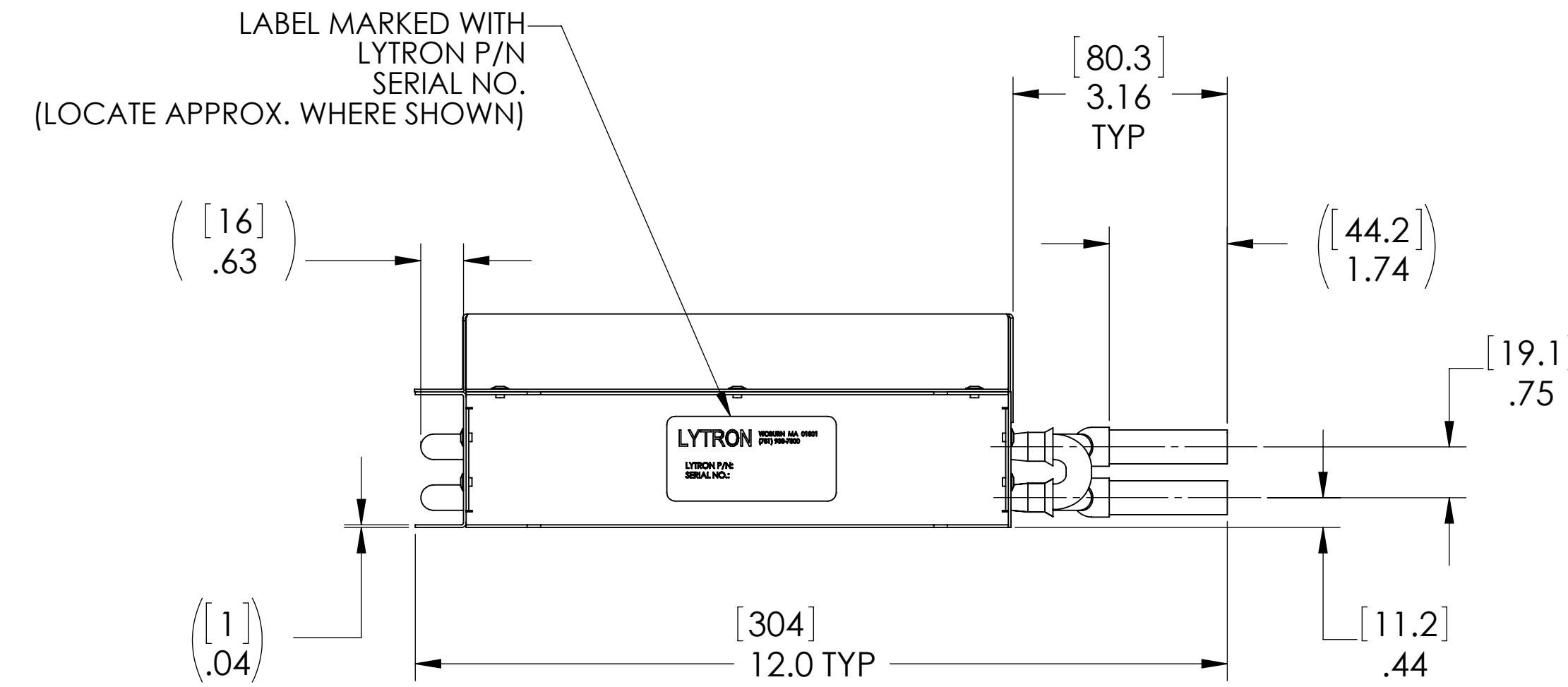


THIS DOCUMENT IS THE PROPERTY OF LYTRON, INC. AND REPRESENTS A PROPRIETARY ARTICLE ON WHICH LYTRON, INC. RETAINS ANY AND ALL PATENT AND OTHER RIGHTS, INCLUDING EXCLUSIVE RIGHTS OF USE AND/OR MANUFACTURE AND/OR SALE. POSSESSION OF THIS DOCUMENT DOES NOT CONVEY ANY PERMISSION TO REPRODUCE THE DOCUMENT OR MANUFACTURE THE ARTICLE OR ARTICLES SHOWN THEREIN.



# M10-080SB1

- NOTES:
1. PRESSURE TEST ASSEMBLY AT 150 PSIG.
  2. DIMENSIONS IN [ ] ARE IN MILLIMETERS.

MATERIAL	
TUBING	COPPER
OUTER FIN	ALUMINUM
FITTINGS	COPPER
FRAME	GALVANIZED STEEL

UNLESS OTHERWISE SPECIFIED		DRAWN	DATE	LYTRON INCORPORATED WOBBURN, MASSACHUSETTS			
ANGULAR DIMENSIONS ± 5° SURFACE ROUGHNESS (3.2 μm) BREAK EDGES .010 (25mm) MAX. REMOVE ALL BURRS		CHECKED		DRAWING TITLE			
TOLERANCE ON DECIMALS		APPROVED		HEAT EXCHANGER ASSY			
INCH .X .XX .XXX ±.1 ±.06 ±.020		APPROVED		SIZE	FSCM NO.	DRAWING NO.	REV
THIRD ANGLE PROJECTION		APPROVED		D	11245	S-M10-080SB1	E
DIMENSIONS AND TOLERANCING ARE PER ANSI STD Y14.5		DO NOT SCALE THIS DRAWING		SCALE	1/2	WT.	SHEET 1 OF 2
		MATERIAL	SEE CHART				
		FINISH	NONE				