

FOR REFERENCE ONLY

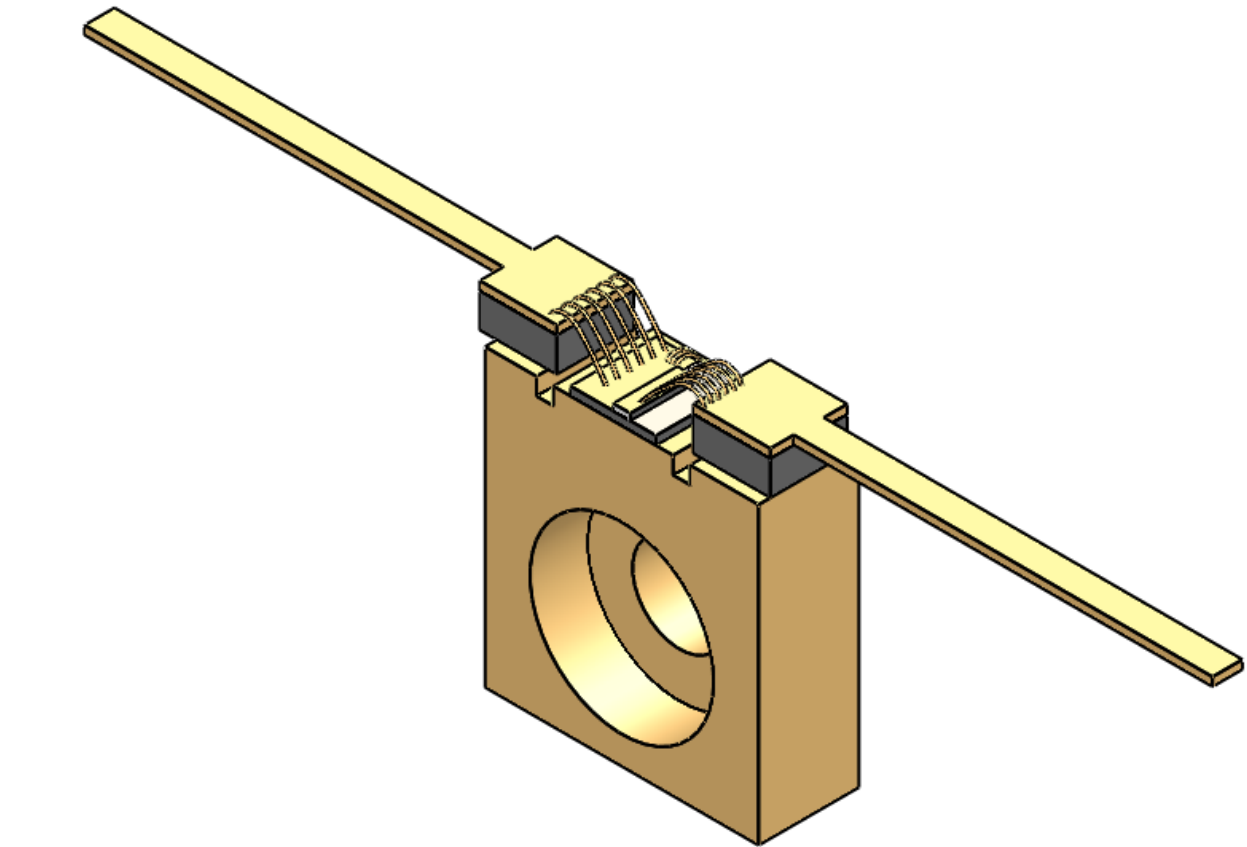
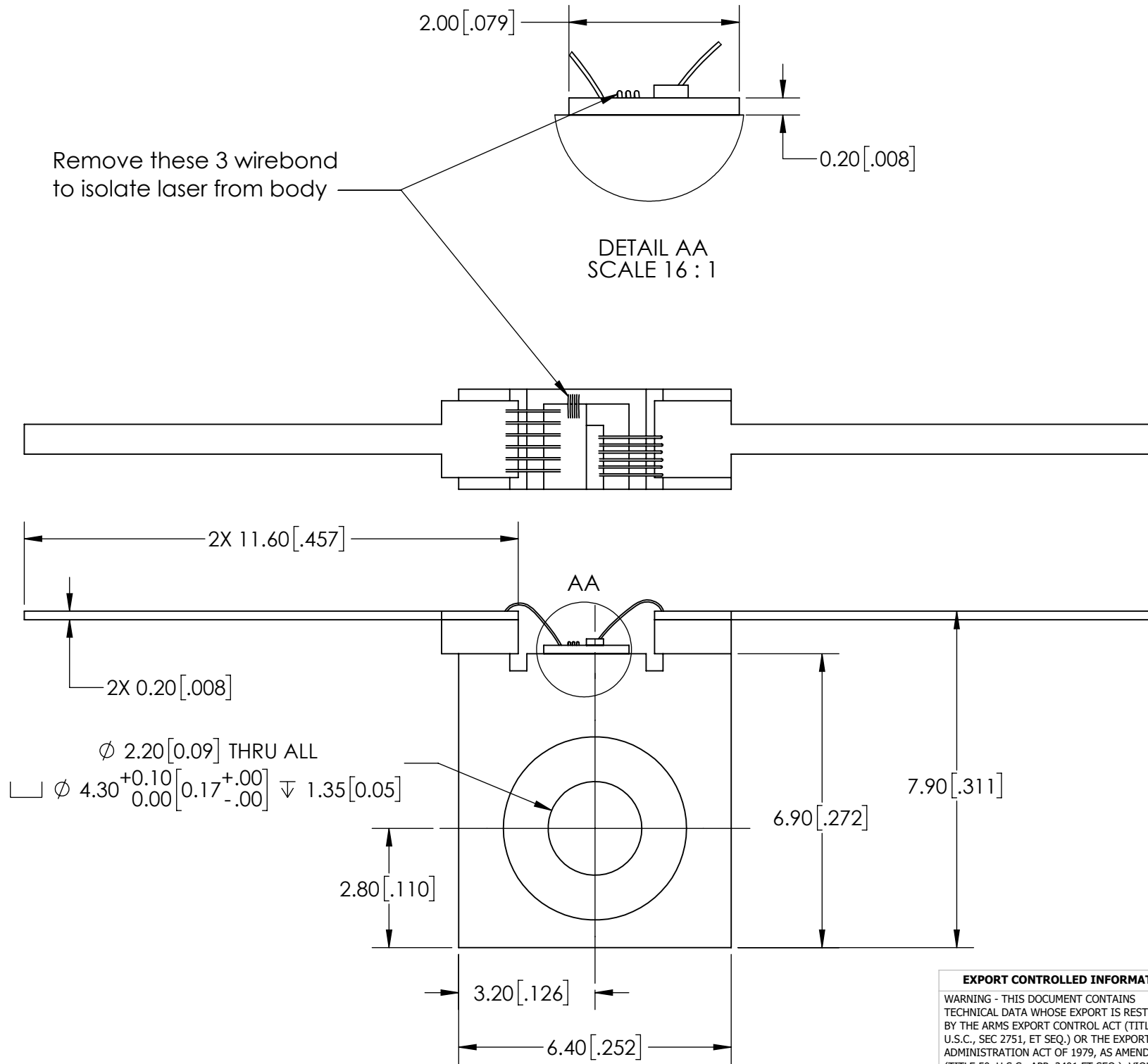
REVISIONS				
REV	DESCRIPTION	CO	DATE	APPROVED
A	INITIAL RELEASE	15909	03/26/2024	JDB

D

C

B

A



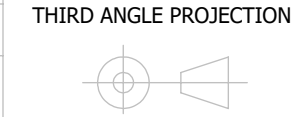
Notes:

1. Mechanical reference only.
2. Mounting and/or thermal sinking solution must be sufficient to maintain device within operational specifications. Use of a thermal pad between package and heat sink is advised.
3. Device is ESD sensitive. Handling precautions are required to ensure device meets specifications. Please visit our website or contact us for safe handling information.
4. Diode is AuSn mounted on Submount.
5. Diode is centered on mounting hole centerline.

EXPORT CONTROLLED INFORMATION
WARNING - THIS DOCUMENT CONTAINS TECHNICAL DATA WHOSE EXPORT IS RESTRICTED BY THE ARMS EXPORT CONTROL ACT (TITLE 22, U.S.C., SEC 2751, ET SEQ.) OR THE EXPORT ADMINISTRATION ACT OF 1979, AS AMENDED (TITLE 50, U.S.C., APP. 2401 ET SEQ.). VIOLATIONS OF THESE EXPORT LAWS ARE SUBJECT TO SEVERE CRIMINAL PENALTIES.
PROPRIETARY AND CONFIDENTIAL
THE INFORMATION CONTAINED IN THIS DRAWING IS THE SOLE PROPERTY OF SHEAUMANN LASER, INC. ANY REPRODUCTION IN PART OR AS A WHOLE WITHOUT THE WRITTEN PERMISSION OF SHEAUMANN LASER, INC. IS PROHIBITED.
DRAWING CLASSIFICATION
UNCLASSIFIED

DIMENSIONS mm [in]
UNLESS OTHERWISE SPECIFIED TOLERANCES ARE: ANGULAR: ± 30 MINUTES X ± .25 [.010] X.X ± .13 [.005] X.XX ± .05 [.002] X.XXX ± .025 [.001]
INTERPRET GEOMETRIC TOLERANCING PER: ASME Y14.5M-2018
MATERIAL Various
FINISH (UNLESS OTHERWISE SPECIFIED) Various
DO NOT SCALE DRAWING

NAME	DATE
DRAWN JDB	03/13/2024
CHECKED JGT	03/20/2024
ENG APPR. JDB	03/26/2024
DH APPR.	
Q.C. KS	10/30/2024



SHEAUMANN				
TITLE: Double Fly-Lead CMD Mount				
SIZE B	CAGE CODE 5KD88	DWG. NO. LOB260059	REV A	
SCALE: 5:1			SHEET 2 OF 2	